



**IN THE BOX**

ITEMS	V80	V60
V80 Control box	✓	
V60 Control box		✓
Carbon fiber rod set	✓	○
Aluminum rod set	○	✓
Armrest+Elbow band	✓	✓
Blizzard11 Coil	✓	✓
Blizzard9 Coil	○	○
WireFree WRXB	✓	○
WireFree Pro HE	✓	○
WireFree Vibe	○	✓
USB Charger+Cable	✓	✓
Headphones Adaptor	✓	✓
Underwater Headphones	○	○

✓: included. ○: optional

**INSTALLATION**



**RECHARGE**



**BASIC TECHNICS**



**Trouble shooting**

<b>NOT POWER ON</b>	Coil is not connected. Power is low, please recharge the detector.
<b>SPEAKER NO ALARM</b>	Check the volume of speaker, or wireless headphones
<b>VERY NOISY</b>	Perform noise canceling. Please find another place with less interference. Lower sensitivity
<b>NO SOUND</b>	Make sure the Volume is not set to ZERO level and/or wireless audio has been activated
<b>FALSING WHEN SEARCHING IN GRASS</b>	Use Velcro tape to secure cable to rod, prevent tangling, and protect from hard impacts
<b>OVERLOAD ALARM</b>	Please turn to BEACH MODE if you are detecting on the beach or high mineralized ground.

**Maintenance**

- Do not twist coil tail or connector to prevent wire damage.
- Store device away from extreme temperatures.
- Use soft object to operate touchpad to avoid damage.
- Avoid chemicals, solvents, and insect repellents that can harm waterproofing, plastics, and finishes. Tightly secure audio protection cap to prevent damage to audio port.

**Cleaning**

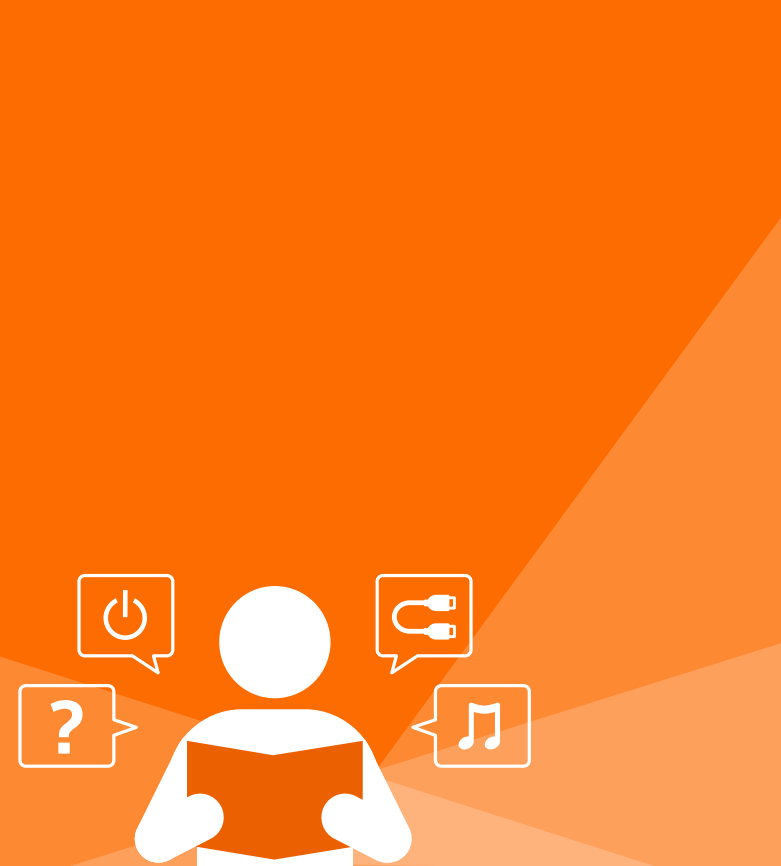
- Clean detector after underwater use, let handle dry completely.
- Beware of sand when changing coils on the beach.
- Clean detector with soft, clean, lint-free microfiber cloth.
- If dampening cloth, turn off device and disconnect from power.
- Gently wipe screen with microfiber cloth.

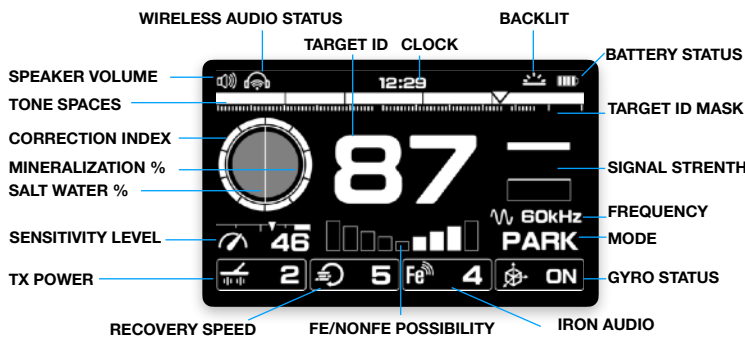
QUEST METAL DETECTORS  
info@questmetaldetectors.com



**QUICK START**

for V80 V60





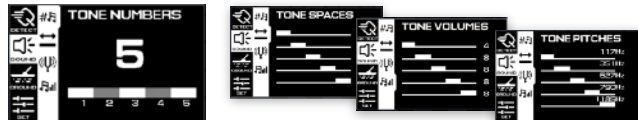
Click to enter MENU. Use to navigate. Click upper to enter 2nd level. Use to navigate in 2nd level menu. Click lower to return to 1st level menu.

KEY FUNCTION	ALTERNATIVE FUNCTION	IN MENU FUNCTION
1 <b>Power on</b>	Hold 0.5 sec to Power off	Hold 0.5 sec to Power off
2 <b>Change modes</b>	Hold for All-Metal	Confirm, Accept/Reject ID
3 <b>Change frequency</b>	Hold to perform noise cancelling	Return to higher level MENU
4 <b>MENU Setup</b>		Exit MENU
5 <b>Pinpoint</b>	Hold for Ground Balance	
6 Volume up	Hold to + volume quickly	
7 Volume down / Vibration	Hold to - volume quickly	
8 Increase sensitivity	Hold to + sensitivity quickly	Scroll up/Increase
9 Decrease sensitivity	Hold to - sensitivity quickly	Scroll down/Increase
10 Backlight adjust	Hold for flashlight	

**DETECT MENU**



**SOUND MENU**



**GROUND MENU**



**SET MENU**



SETTINGS

FUNCTION	DESCRIPTION
<b>Target ID Masking</b>	Make custom patterns to separate wanted from unwanted targets. Each target is shown by a number and a spot on the Discrimination Scale (1-99). By choosing or not choosing, you can decide if they will be detected or ignored.
<b>Transmitter Power</b>	Adjust the strength of the electromagnetic field by changing the TX POWER to different levels. The stronger the TX POWER, the better the performance and it's a good option for finding high-conductive targets such as large masses, treasure, and certain currencies.
<b>Recovery Speed</b>	Choosing a faster recovery speed helps to quickly analyze signals in trashy conditions. A slower recovery speed is better for clear and clean environments for increased depth.
<b>Saved Programs</b>	Under this menu, press and hold the accept button to save your current settings. You can also save your favorite settings as personal programs for different situations, and manage them here. You can apply, edit, or pin a selected program to the top for easy access.
<b>Tone Numbers</b>	The Target Tone Numbers categorizes target sounds into several spaces. The more tone spaces you have, the more different sounds you will hear. The changes will showed on the ID bars at the stand by interface as well.
<b>Tone Space</b>	Under this menu, press the accept button to choose between different joints, and use the up/down buttons to navigate back and forth.
<b>Tone Pitch</b>	Tone Pitch lets you customize the sound frequency of target responses based on target categories from 90 to 1500Hz. It allows you to customize your desired audio and enhances your ability to hear desired targets.
<b>Tone volumes</b>	The Tone volume gives you complete control over the audio volume for detected targets in each Tone space.

FUNCTION	DESCRIPTION
<b>Ferrous Bias</b>	Iron Bias setting gives the machine permission to identify ferrous-appearing targets as iron or not. It helps the detector accurately classify big or intricate iron targets (such as rusted nails or bottle caps) as ferrous, making them easier to reject.
<b>Threshold</b>	A threshold tone is a continuous background noise that assists in distinguishing between desirable and undesirable targets, as well as detecting soft signals. It is critical setting in Gold Prospecting.
<b>Gyro Sensor</b>	Instruct the detector to automatically initiate ground balance without manual button press. Enable the detector to automatically enter power-saving mode if there is no motion detected for 5 seconds. Activate motion detection for the detector to measure swing speed and angle for improved accuracy.
<b>Manual Ground Balance</b>	Manually select the ground effect correction
<b>Display Setup</b>	Accurately setup backlight brightness, LCD refresh rate Clock setup
<b>Wireless Setup</b>	Manage wireless headphone connections, including searching for new devices, pairing, and unpairing headphones.
<b>Reset</b>	Reset to factory default setting